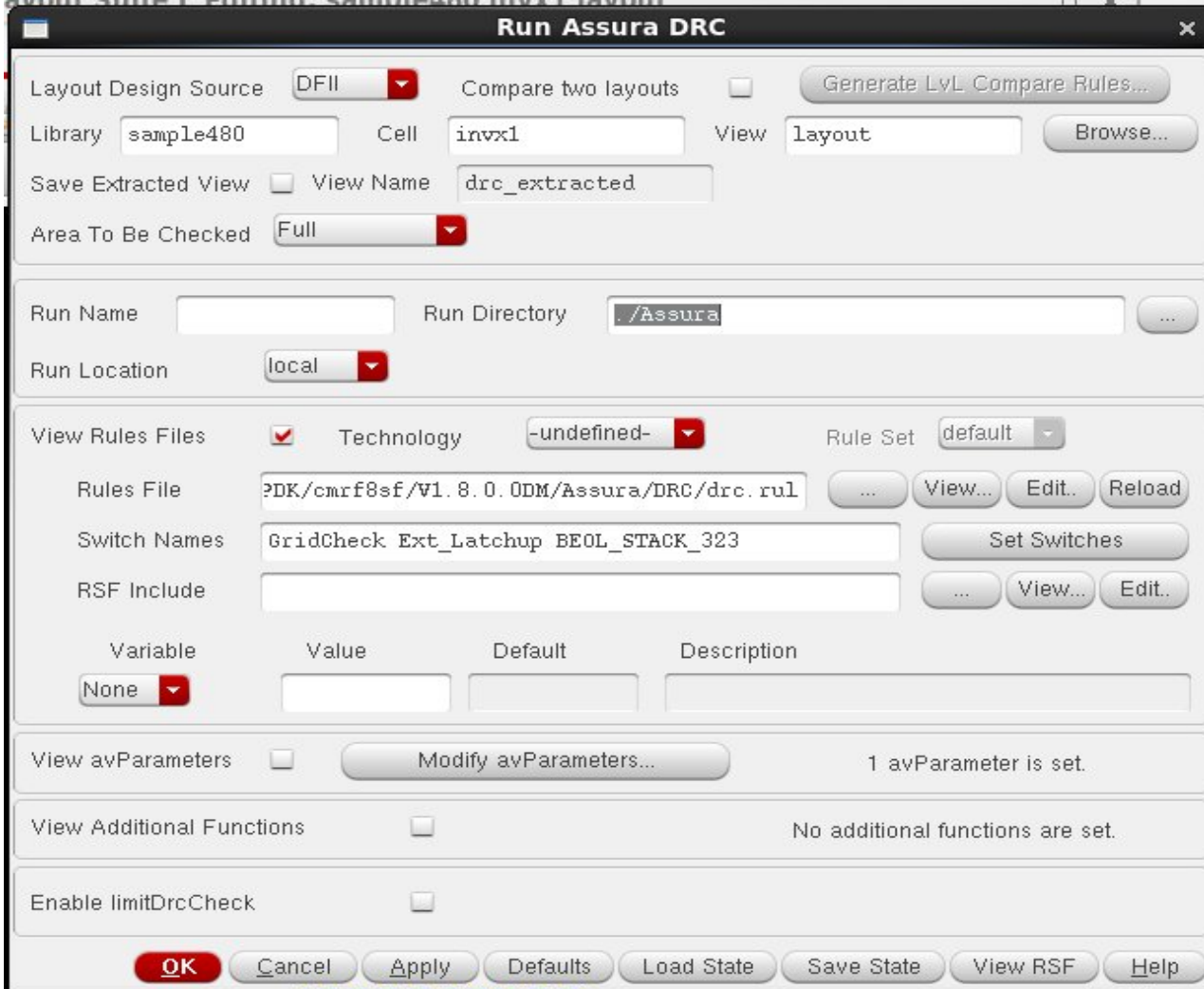


RUNNING DRC

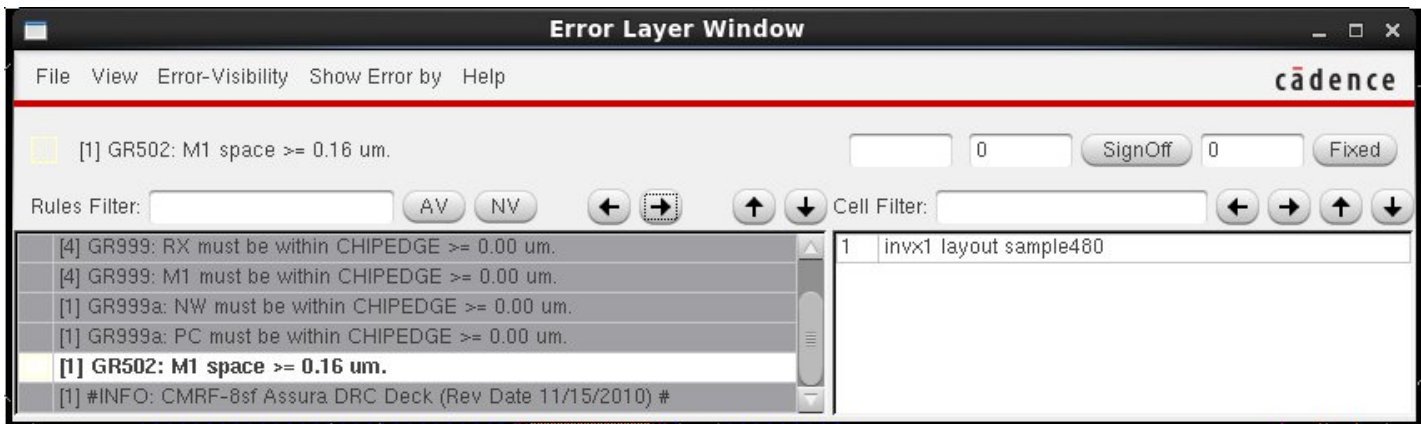
1. Go to IBM_PDK... Checking... Assura... DRC...
2. Make the Run Directory... Assura...
3. Press Ok (leave all the other values as default).



DRC will start running.



4. Click Yes.
The following window will open.



Ignore any error with INFO, GR999, GR999a; they will disappear as soon as we will place the layout in the pad frame.

5. For any other error, click on the error and then click on the symbol → and Assura will zoom into the error in the layout.
6. Remove the error and run DRC again until all the errors have been removed and you will get the below window.

