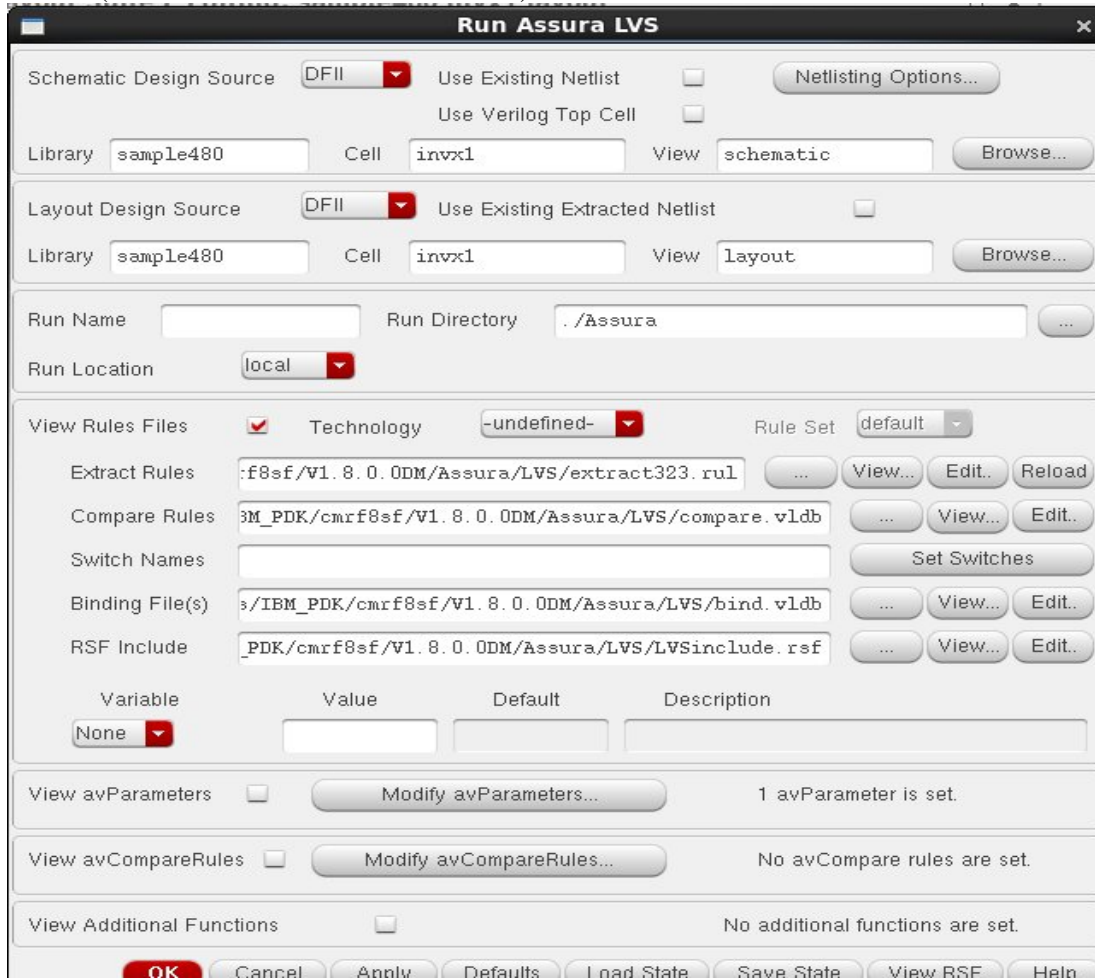
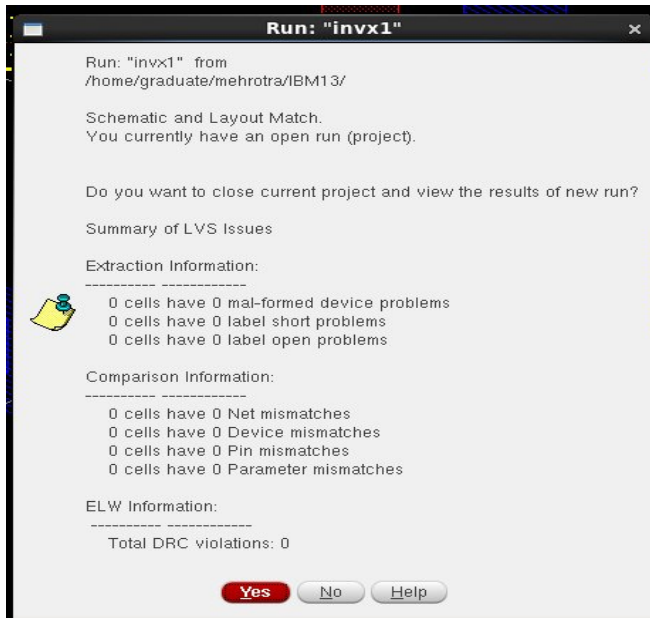


RUNNING LVS

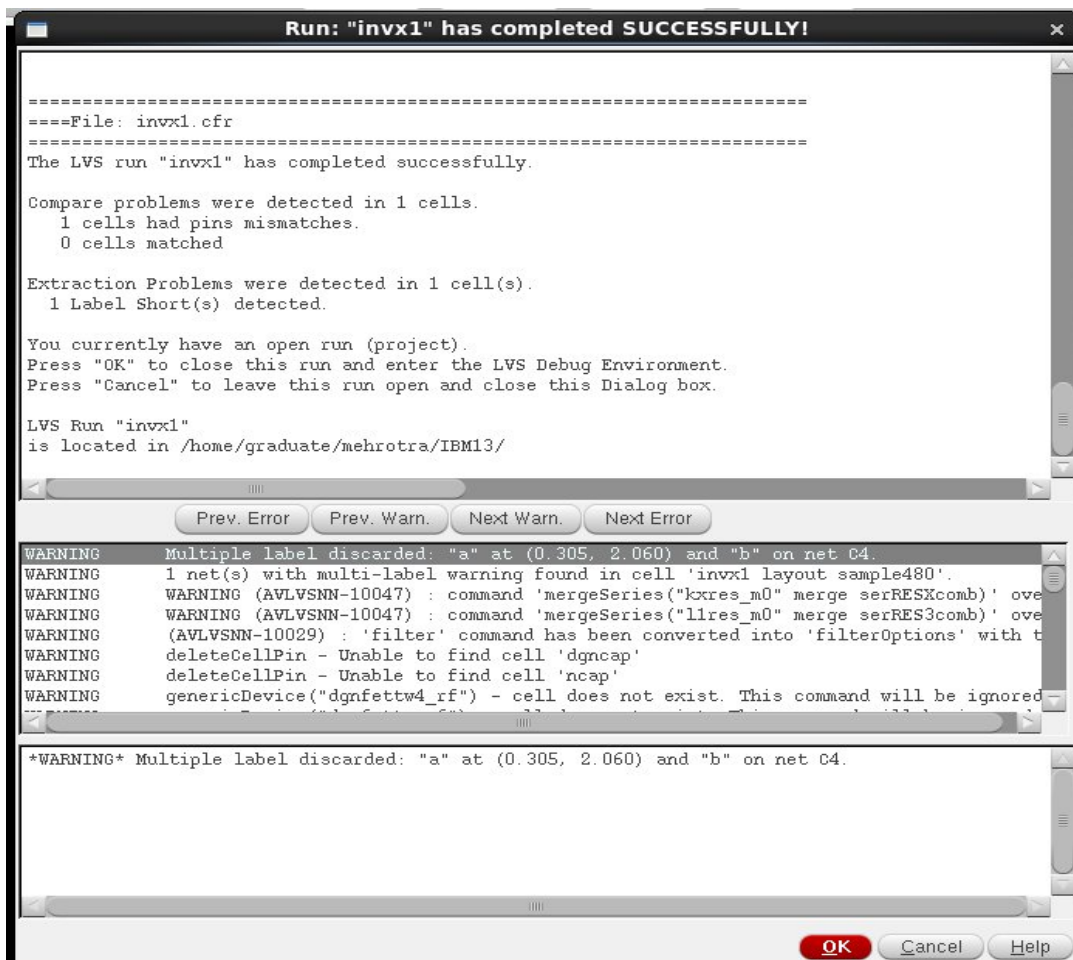
1. Go to IBM_PDK... Checking... Assura... LVS (VLDB)...
2. Run Directory... Assura...
3. Change the rules file from extract323.rul to extract32.rul; if it is giving an error then leave it as extract323.rul
4. Ok (leave all the other values as default).



If the schematic and layout are matched LVS will look like:



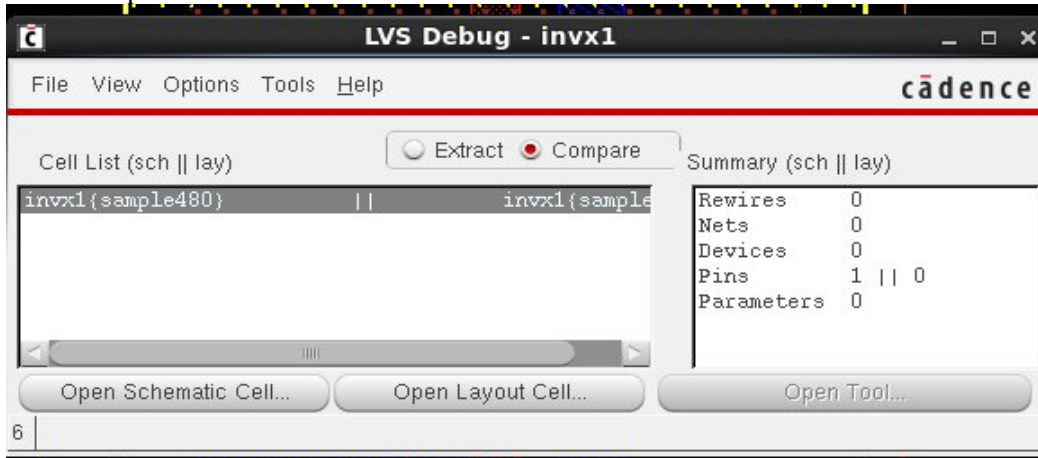
Otherwise LVS is not successful and it will give errors in the window, such as the one below.



- Click OK.



- Click compare.



- Click on the type of error and Click on Open Tool.



- Click on the error... Probe... Zoom, the errors will be zoomed in, remove the errors and run the LVS again until all the errors have been removed.